



AWARD OF DISTINCTION

Project Title

Benches for the Plaza of Tanshui

Student Name

Ming-Chieh Chen

Level

Graduate

Course

Studio

Advisor/Instructor

Chen-Cheng Chen

Principal Investigator

Chen-Cheng Chen

Department/School

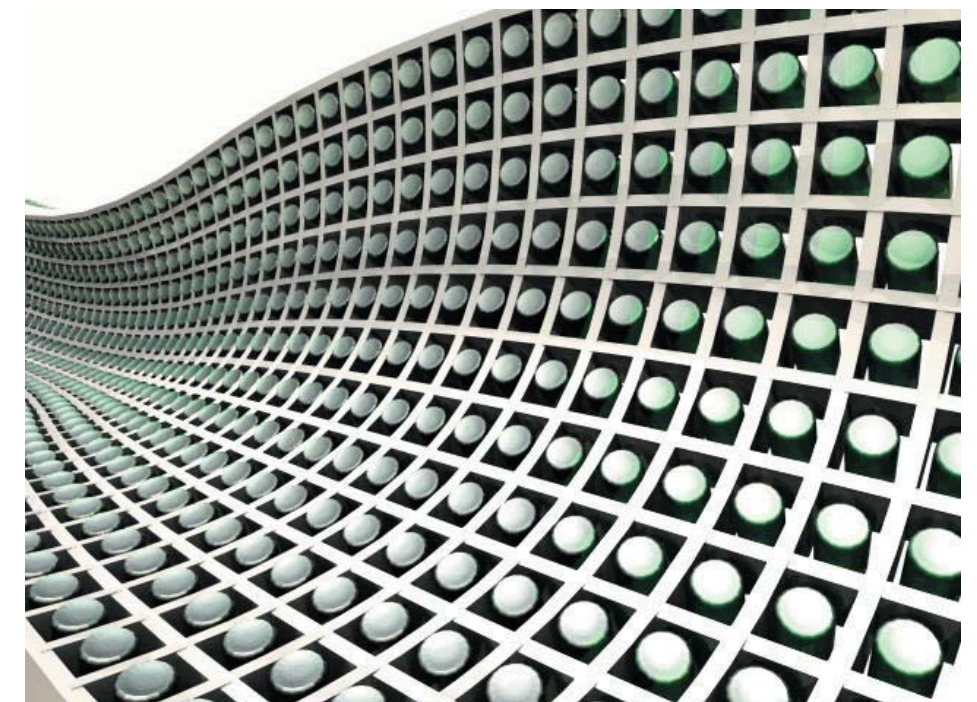
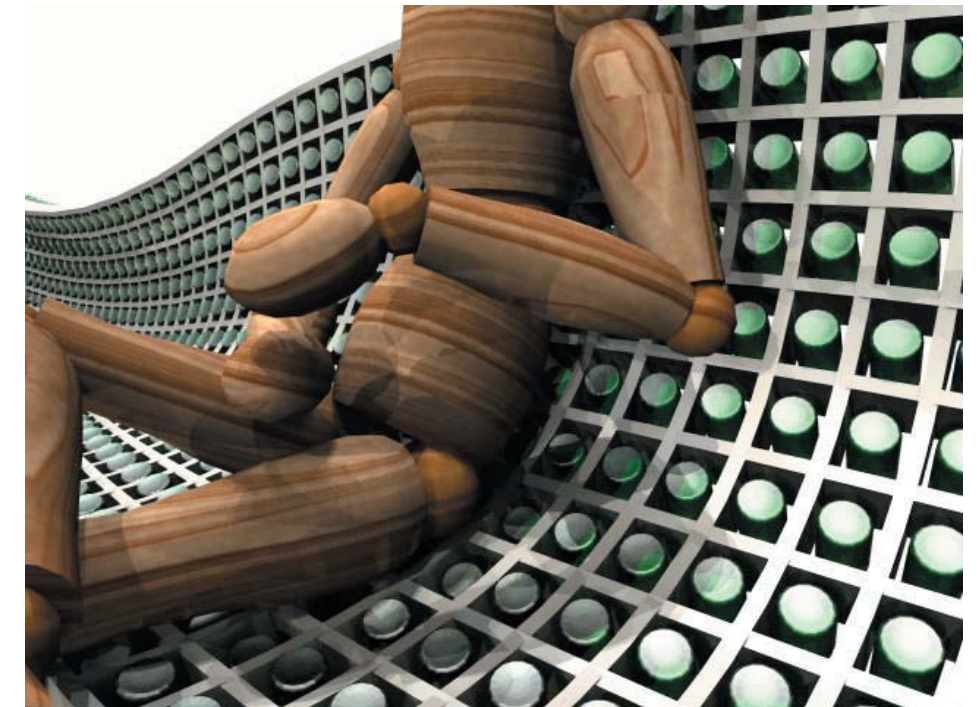
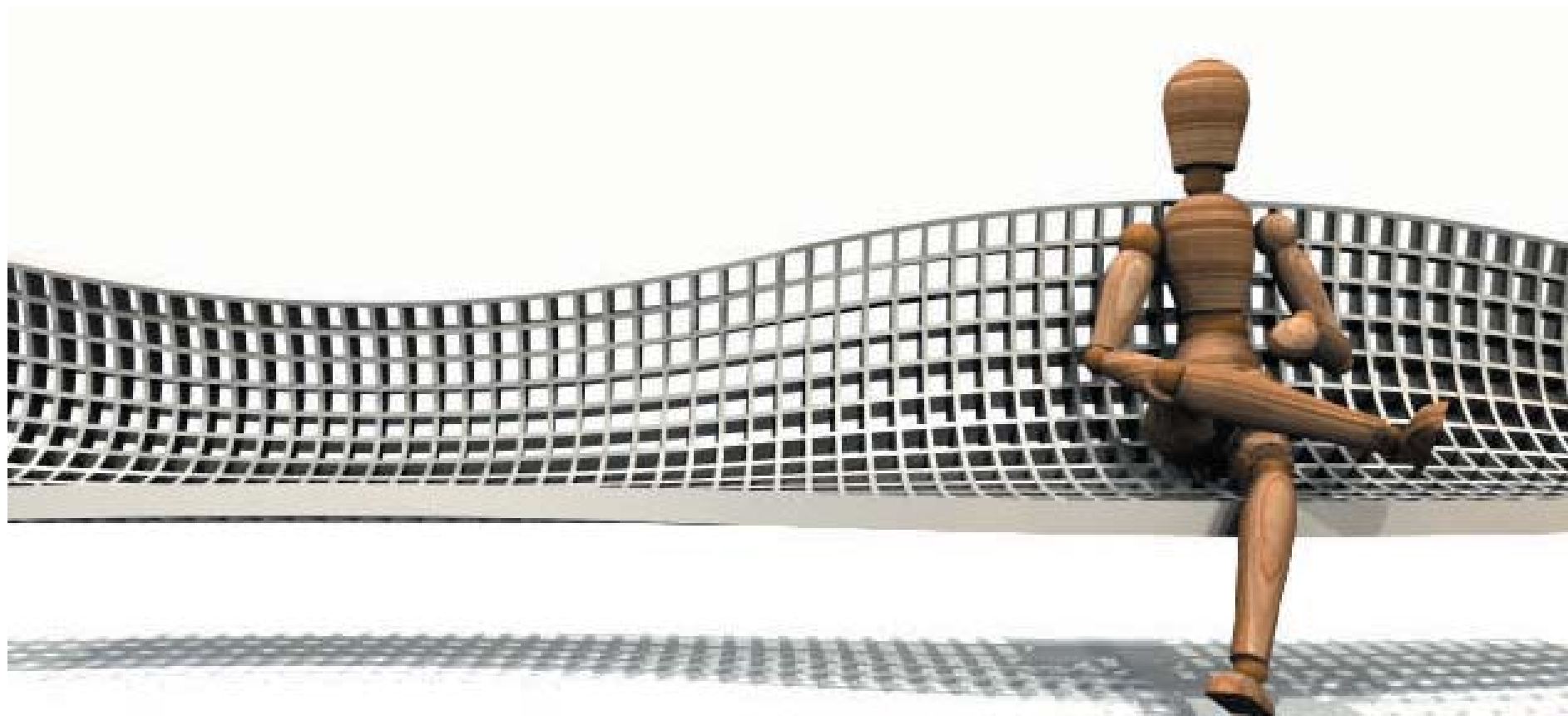
**Department of Architecture,
Tamkang University, Tanshui, Taiwan**

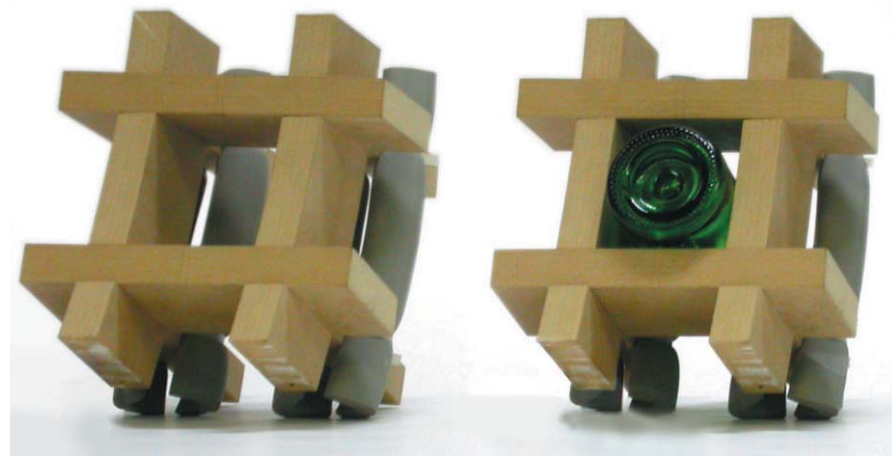
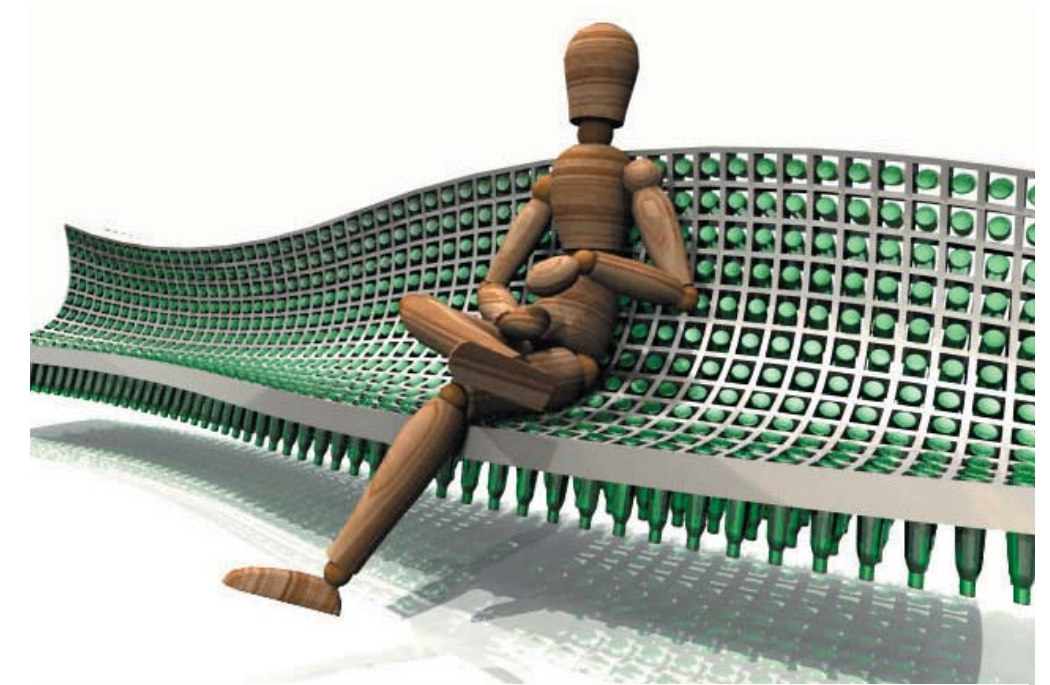
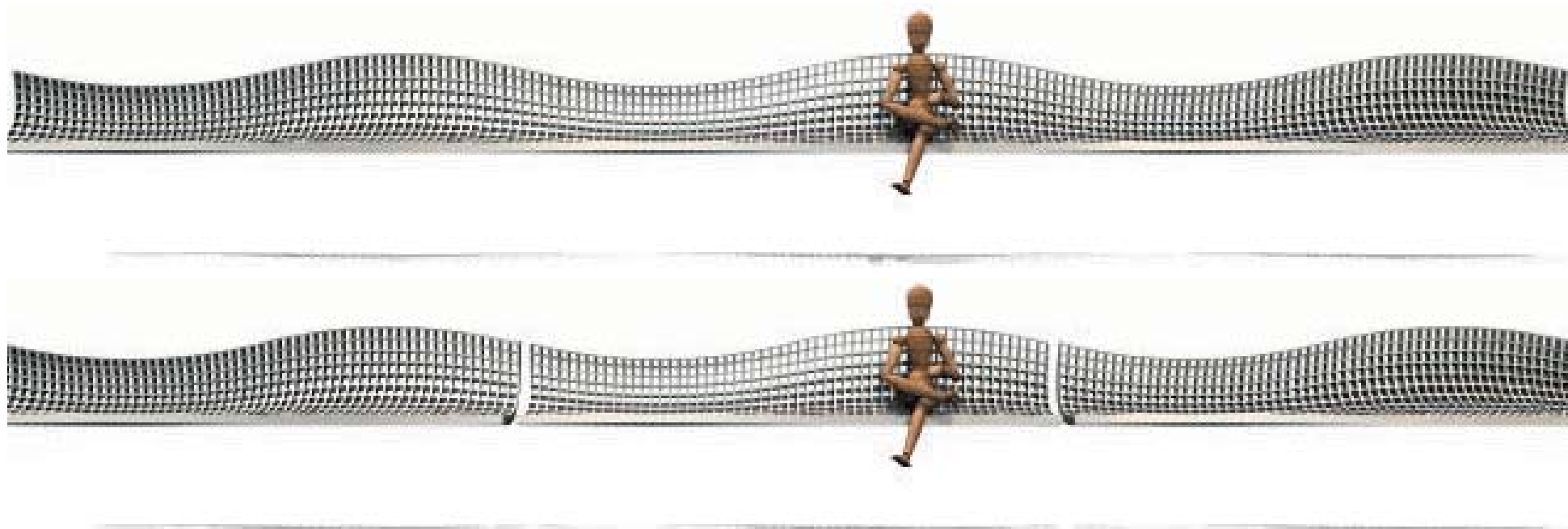
Summary description of project:

After on site observations, street lamps and benches are designed. They are intended for tourists to place the bottles of the famous Tanshui soda-water, which results in interesting street furniture for the plazas of the town.

Reasons for the nomination:

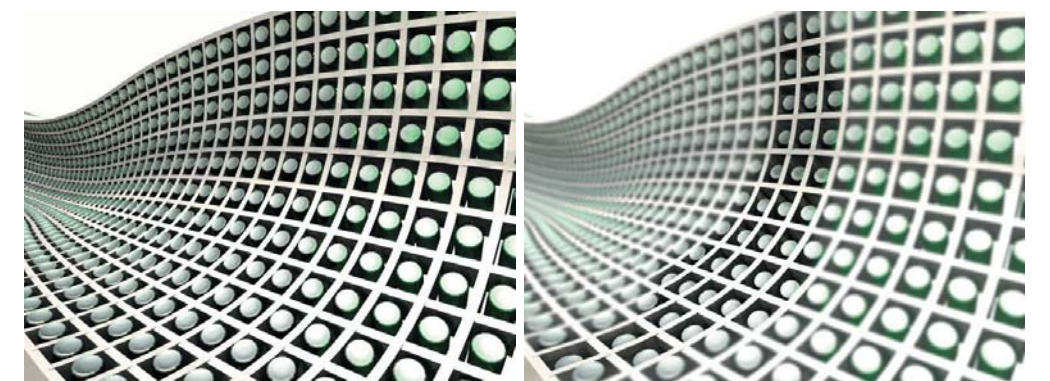
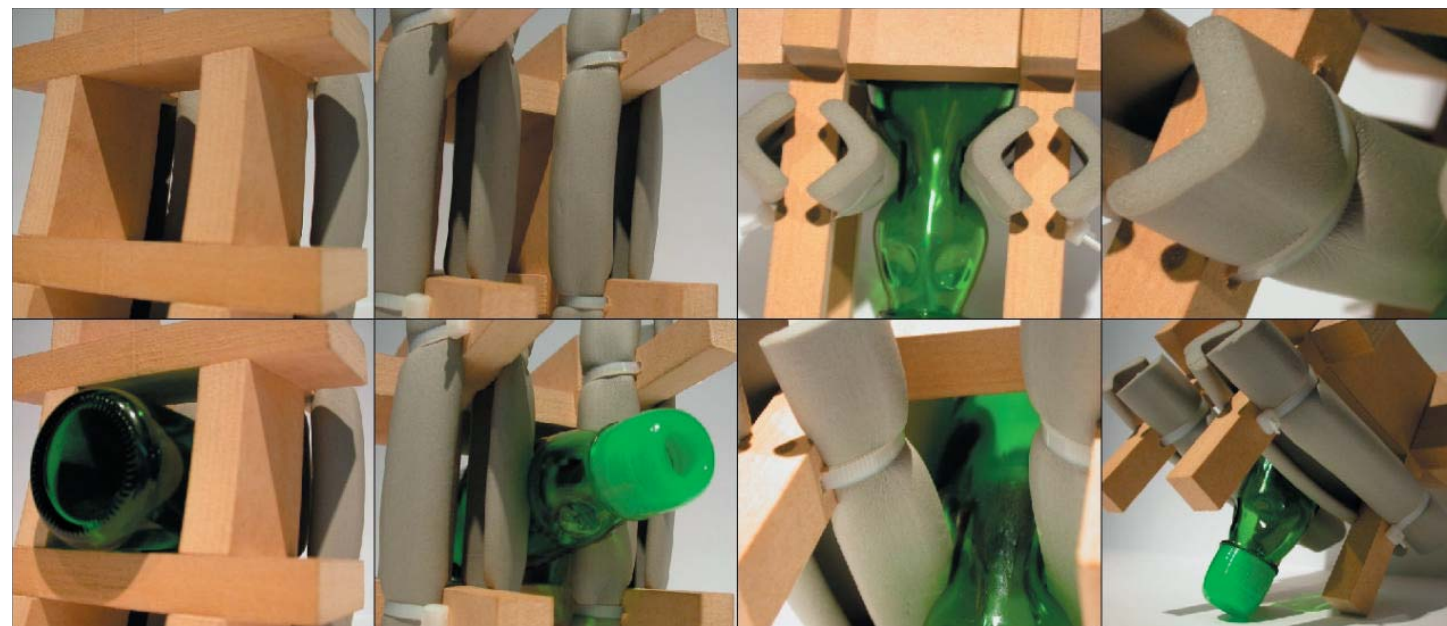
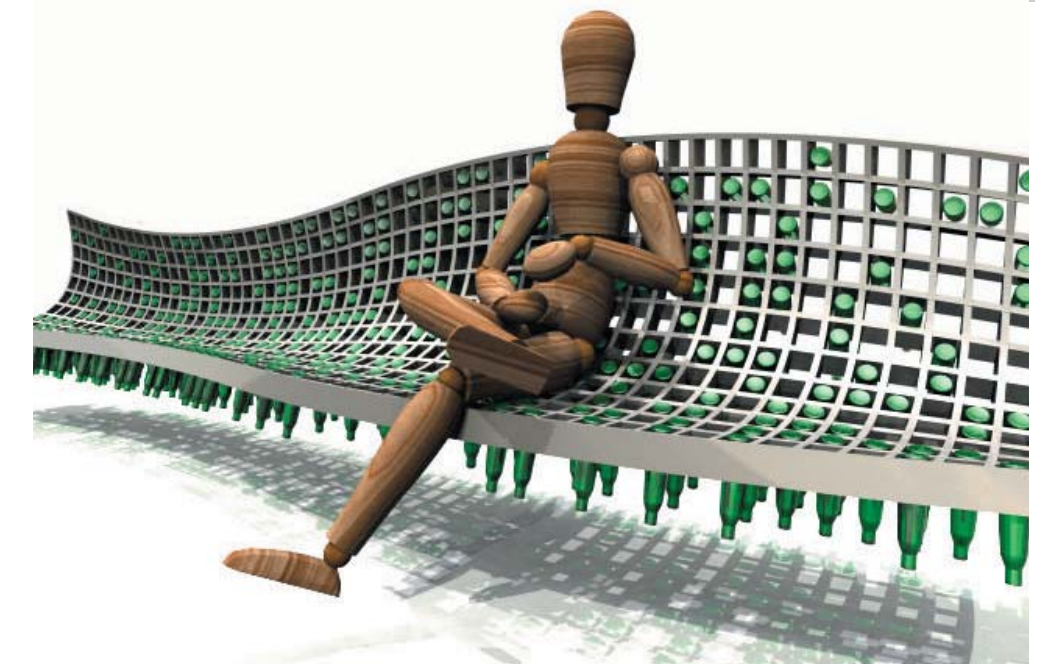
In this project, the designer deliberates very carefully about which **form•Z** commands would best accommodate the different modeling requirements. After the bench is modeled in the software, part of it is also fabricated in one-to-one scale.

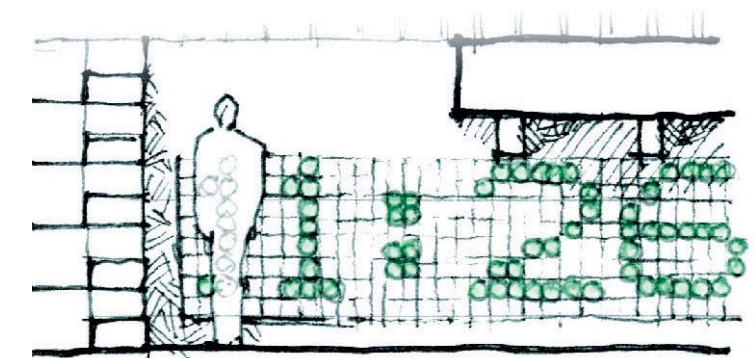
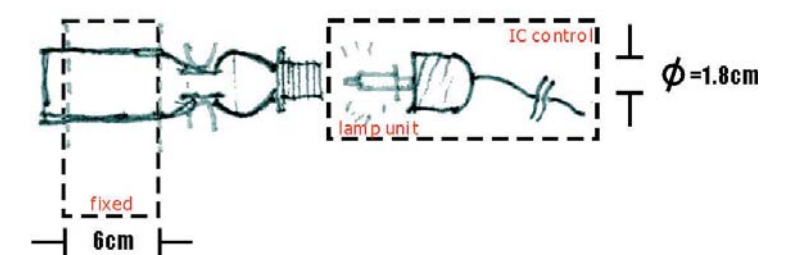
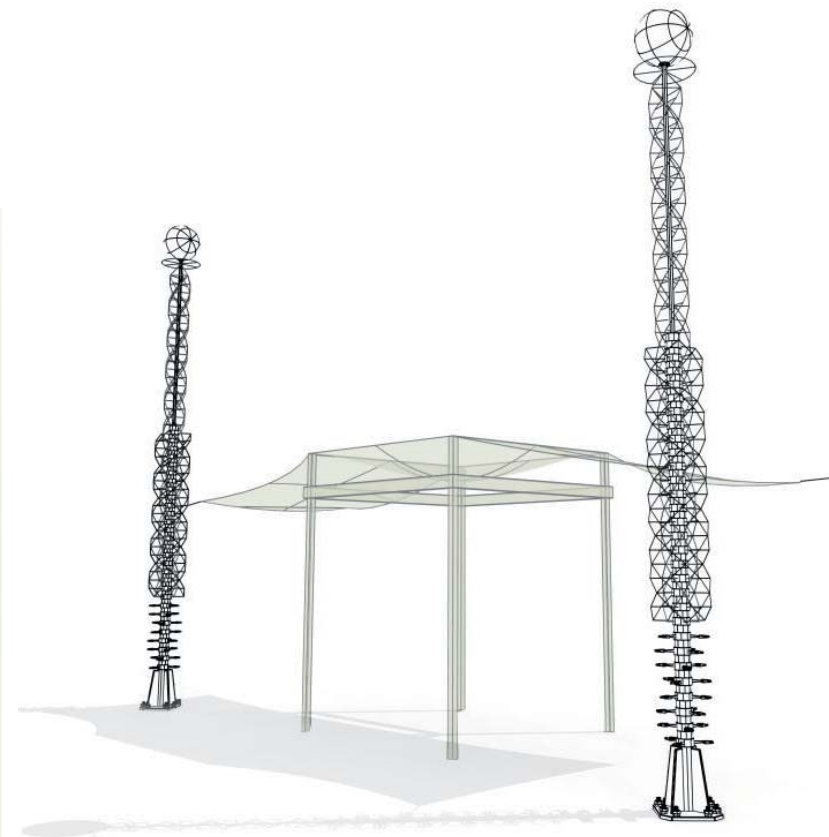
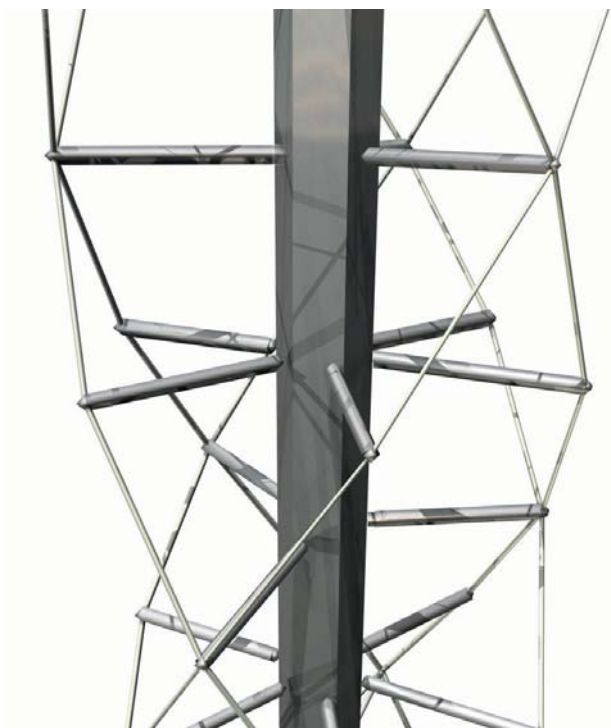
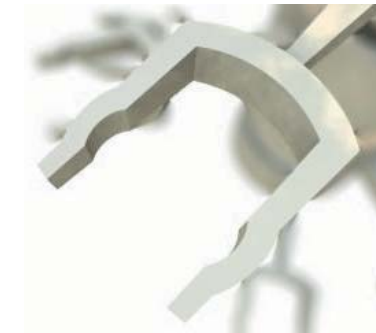
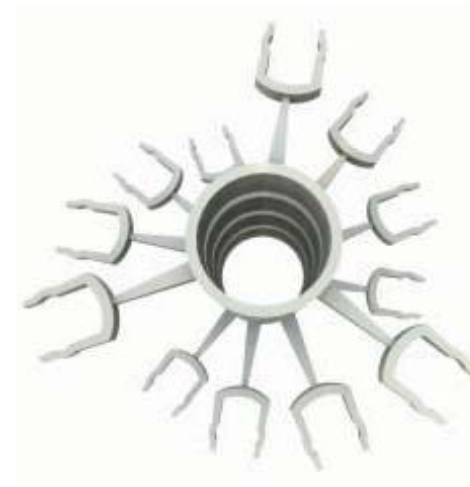




Jury comments:

The designer's passion to elevate the soda bottles of Tanshui to the level of art is commendable. The main idea of a bench for tourists is an intriguing one, albeit underdeveloped. It is a plausible idea. If we ignore the fact that as presented, the bench seems to defy gravity and float in the air, the modeling skills have been well-demonstrated. **–Mahesh Senagala**

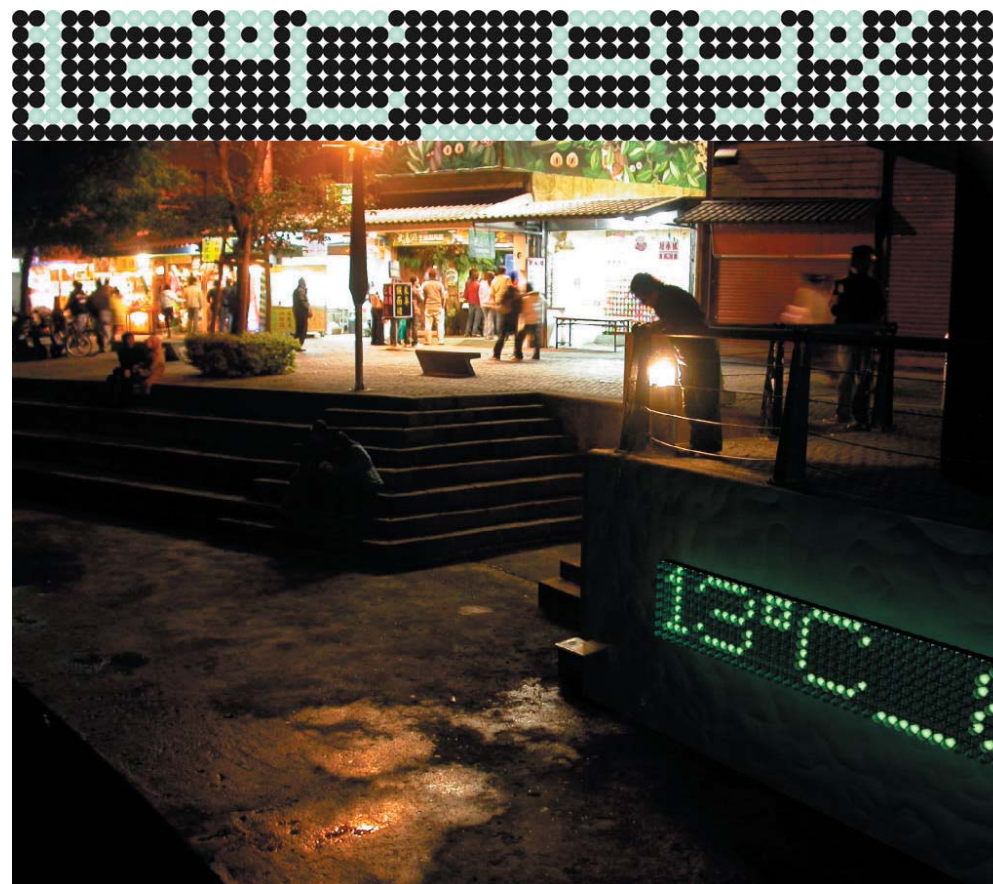




Jury comments:

A well-considered use of seating and soda water bottles, combined with the extended use of **form•Z** to generate a unique and innovative design. —**Gregory McCambley**

Quirky—universal yet local in its ties to place and products. —**Ruth Gless**



Drink, Ramunei !

[Vessel / Handbill / Recycle Unit / Lamp]

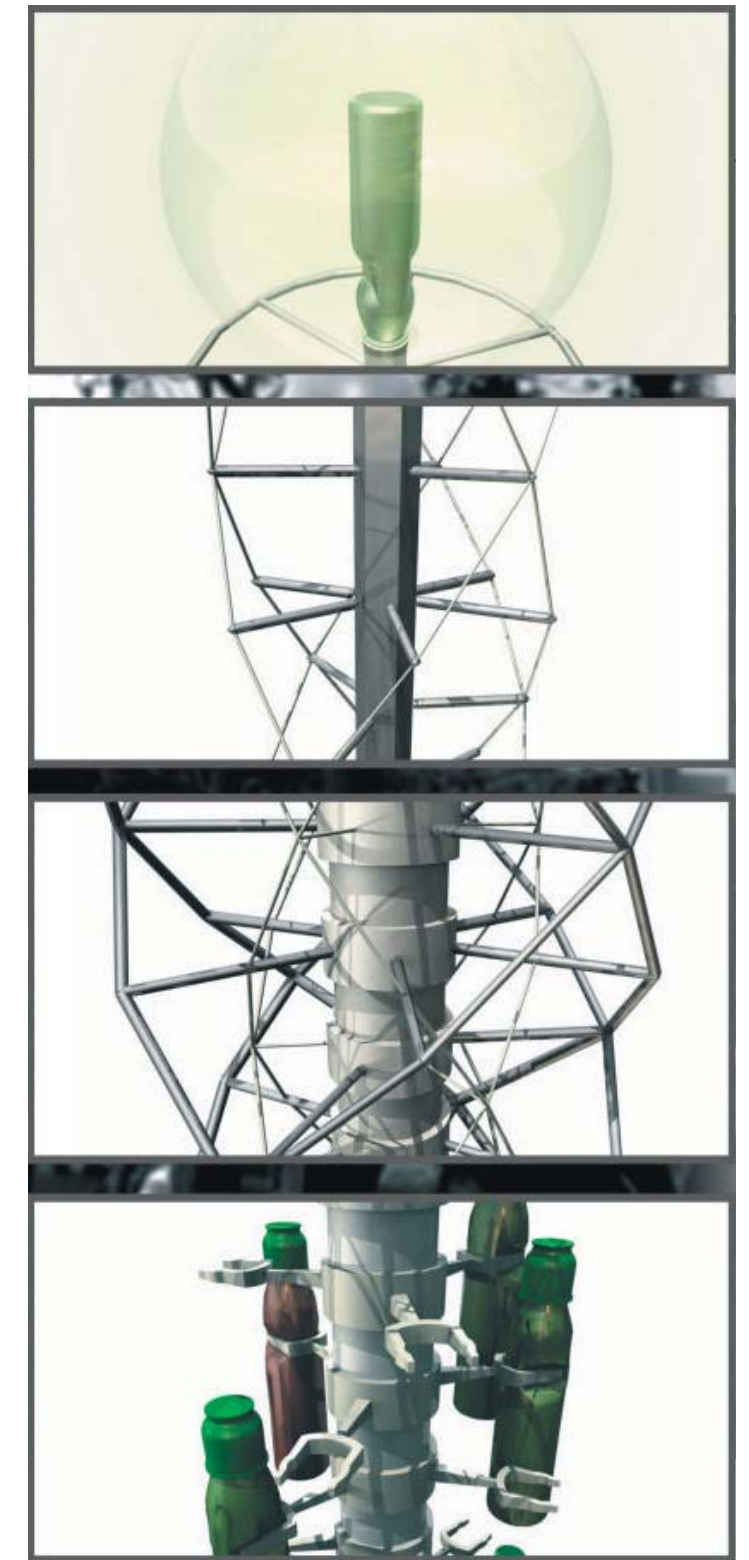
Location : Ferryboat Dock, Tamshui Town

Advisor : Chen-Cheng Chen

Ramunei is a kind of popular drink in Tamshui. With a beautiful glass-bottle and a marble inside, Ramunei has an original drink vessel. At first, this kind of vessel is hard to reproduce, it only made in Japan and the Netherlands. Now, almost of the vessel is made in Taiwan, and you can easy find it in the traditional store near the ferryboat dock in Tamshui.

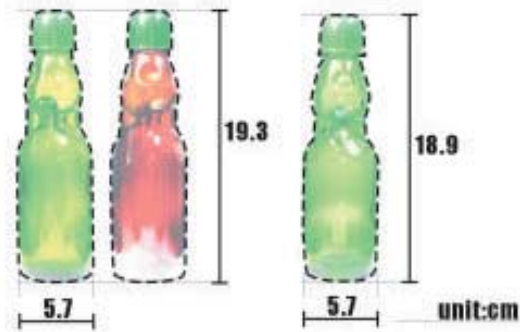
These beautiful bottles had become a recycling problem, because the glass is too slippery to pick it from the trash can. Most of the tourists are also confused about dealing with this vessel. "discard? or give back to the store?"

This project began from an observation with Ramunei. I make some objects with interaction on the busy street. Tourists can do something like play or storage with it, and to increase the efficiency of Ramunei recycling.



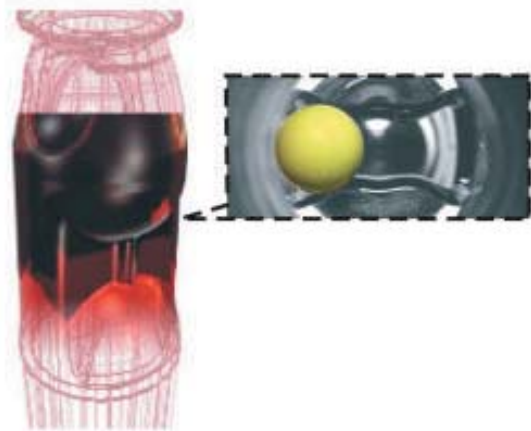
about Vessel

two size, and two color.



the SECRET

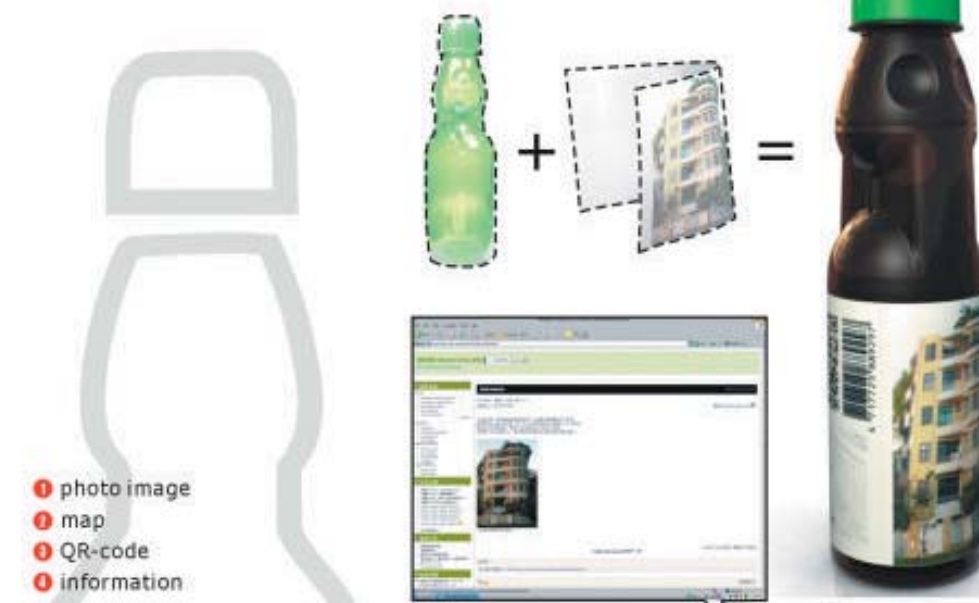
Sound maker.



counter clockwise

Project 01. wrapping / handbill

the wrapping paper of Ramunei just like a handbill.



1 photo image
2 map
3 QR-code
4 information

Complex block containing a photo of a building, a map, a QR code, and a barcode.

"the image of the city" in Tamshui



Design of wrapping paper on Ramunei.

