

**Award of
Distinction**

Project Title: **Institute for Jazz Studies at Fort Adams Park,
Site of the Newport Jazz Festival, Newport, Rhode Island**

Student Name: **Jeffrey R. Olgin**

Level: **Fourth Year**

Course: **Architecture Studio IV**

Advisor/Instructor: **Bennett R. Neiman**

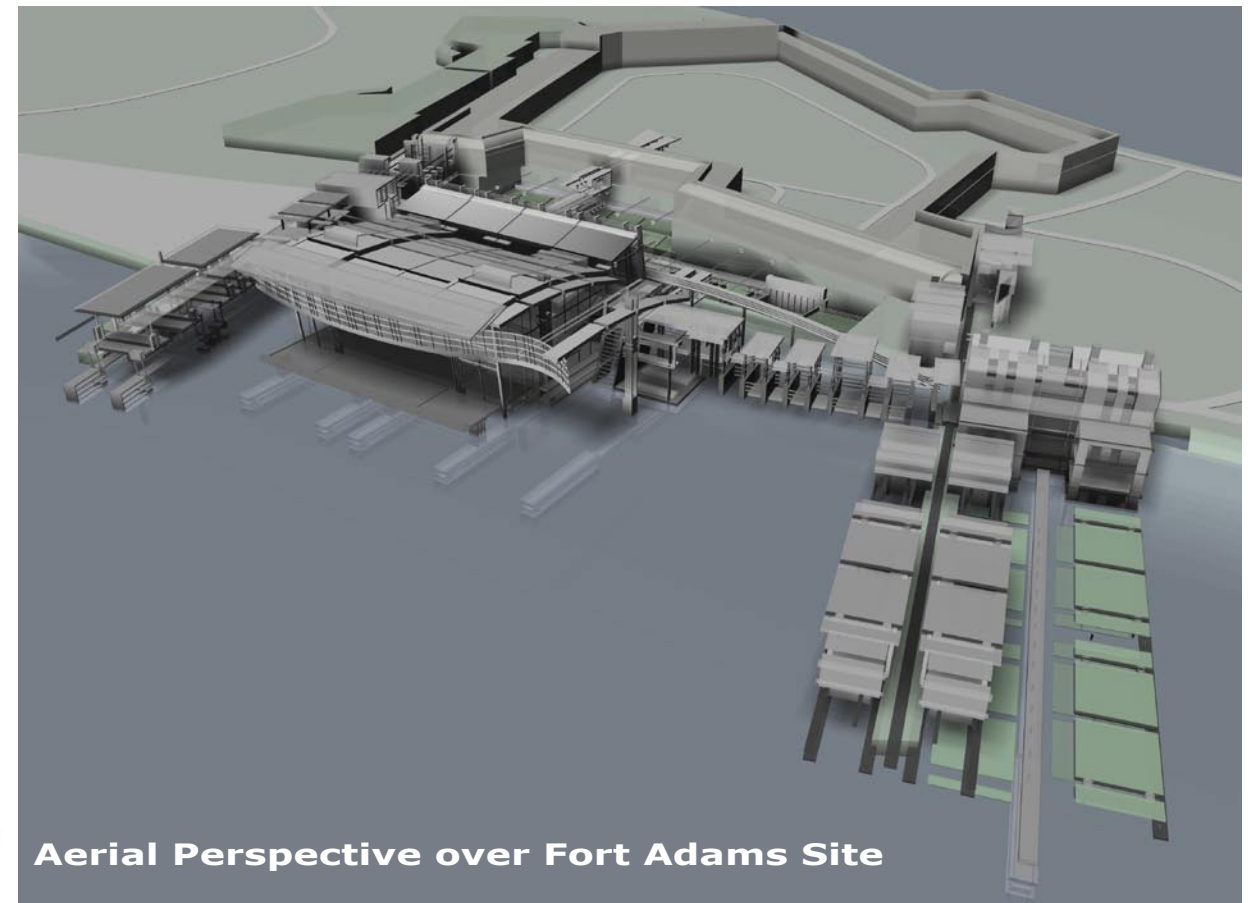
Principal Investigator: **Bennett R. Neiman**

Department/School: **College of Architecture, Texas Tech University, Lubbock, Texas**

Summary description of project:

The diagrammatic analysis of "Lester Leaps In" generated a series of collages and tracings consistent with musical notation and structure. This collage sequence allowed for subsequent investigation of the Fort Adams site. Further analysis of the collage produced layered line tracings that were reconfigured into speculative sections. The spatial relationships found in the relief studies and layered slice models were developed from this series of section drawings. The collage sequence introduced a series of scaled tracings derived from the structure and detail seen in the original diagram. These tracings act as a bridge between the diagram sequence and the sectional analysis. The Institute for Jazz Studies program required the following major components: Campus, Tourist Traps, Performance, Gardens, Plazas, and Transportation.

Through the diagrammatic analysis of "Lester Leaps In", the program was sited in a manner consistent with musical notation. The layers reflect the rhythmic patterns and fluctuations that occur throughout improvisational Jazz music. The layers created through diagrams positioned on the Fort Adams site create two distinct bars that are connected by a bridge element. The two bars house the campus and museum environments while the bridge connects the music and performance elements.



Aerial Perspective over Fort Adams Site

Jury Comments:

This is a big architecture project! And the result looks very realistic and achieved. I especially like the integration between land and sea in a very fluid building design. Technical views are readable at a glance and technical building solutions are obvious.

Modeling explains the concept very well and I believe it was not that easy to organize it in **form•Z**. The presentation is clear and the rendered views integrating real life make me feel like I want to assist the next festival or just be there to enjoy a drink.

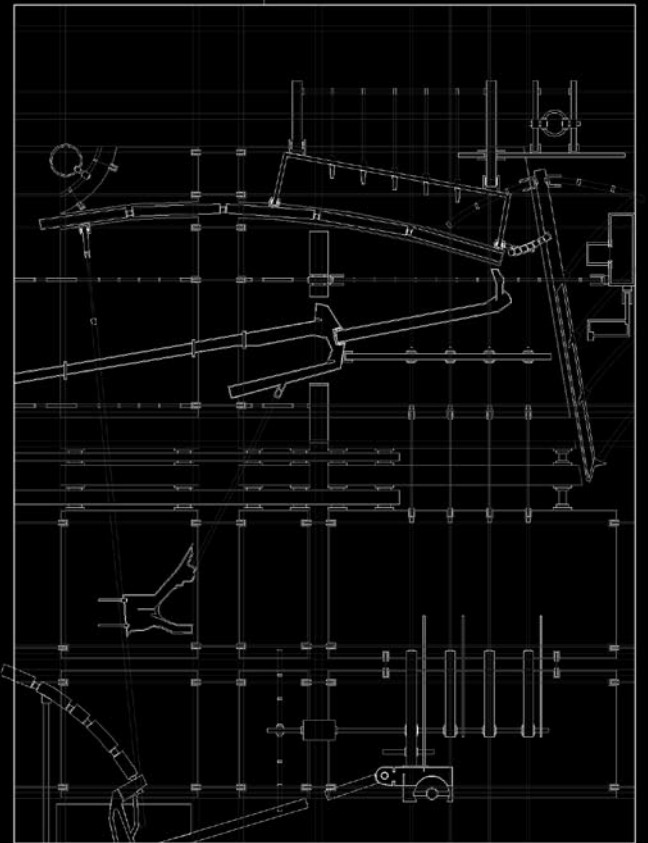
A very professional work and a very attractive building.

•**Christian Allebosch**

This project uses a series of views to carefully provide a visual interpretation of the program while leading the viewer through the design process. The subtle choice of colors in the rendering further strengthens the professionalism in this presentation.

•**Greg Conyngham**

layer

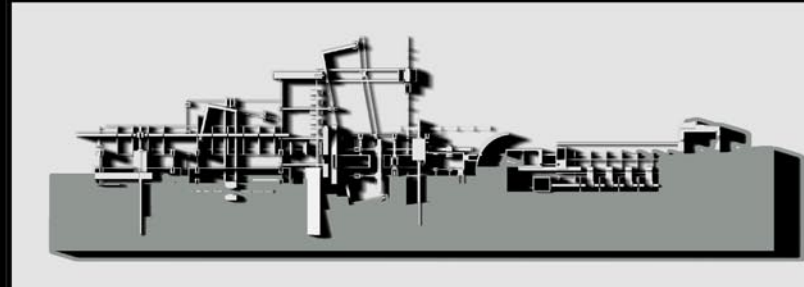


The collage sequence introduced a series of scaled tracings derived from the structure and detail seen in the original diagram. These tracings act as a bridge between the diagram sequence and the sectional analysis.

trace

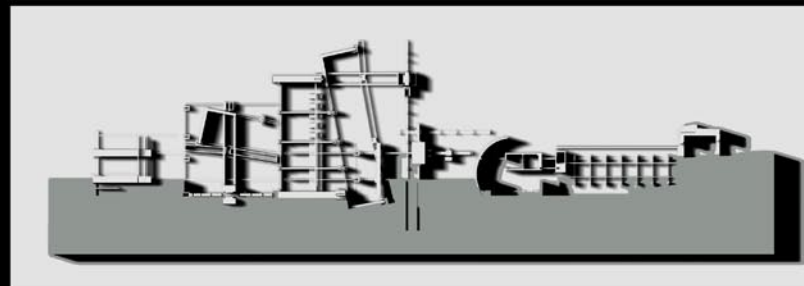
layer

SECTIONAL ANALYSIS UTILIZING FORM-2 TO PRODUCE A SERIES OF SPECULATIVE RELIEF MODELS



SECTION E - E

OVERALL LAYERED SPECULATIVE SECTION



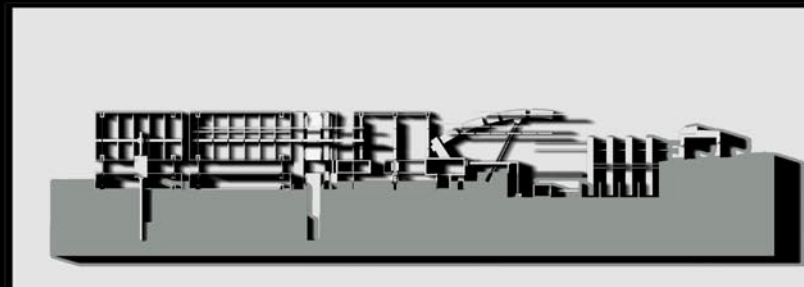
SECTION F - F

LAYERED PERFORMANCE HALL SPECULATIVE SECTION



SECTION G - G

LAYERED JAZZ INSTITUTE SPECULATIVE SECTION



SECTION H - H

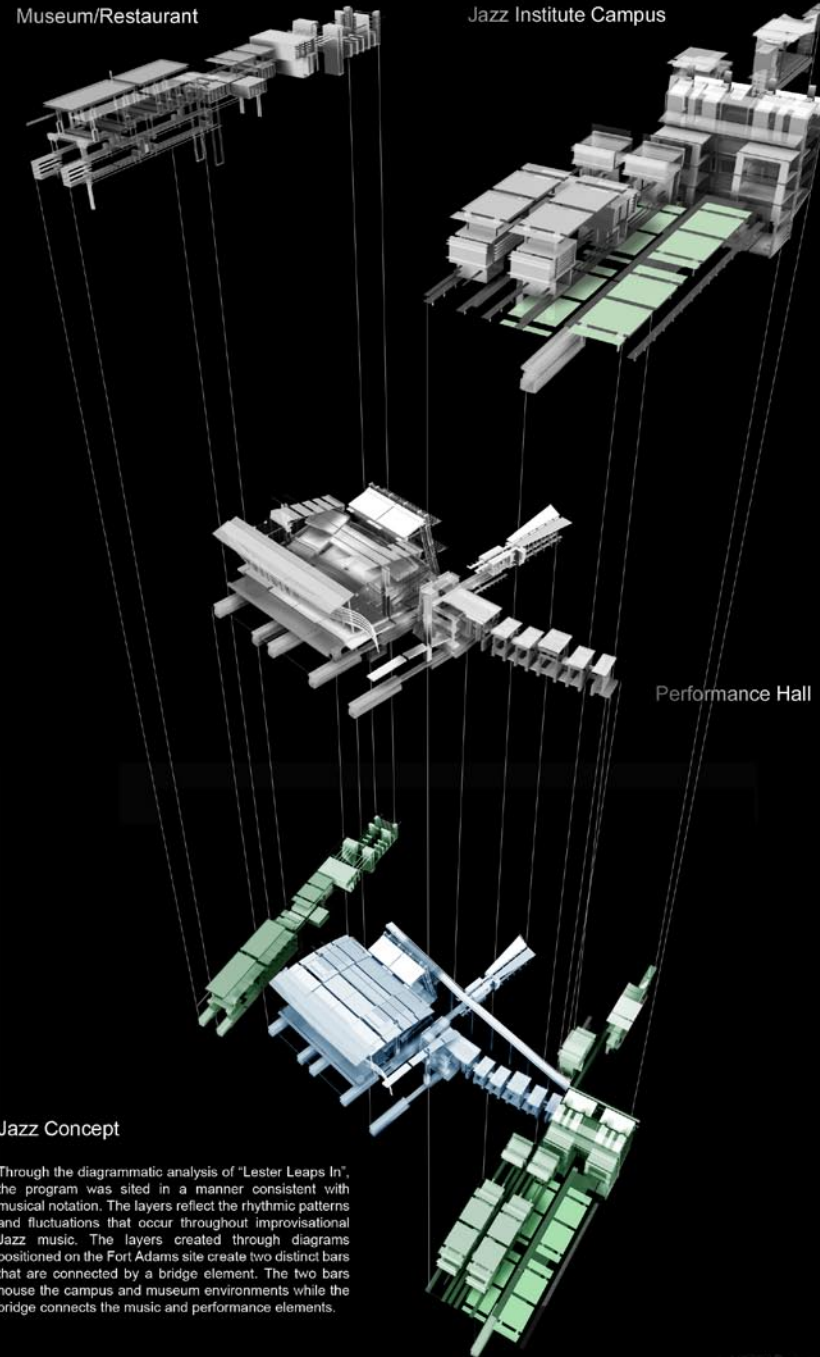
"LESTER LEAPS IN" RESTAURANT/NIGHTCLUB SPECULATIVE SECTION

relief

layer

Museum/Restaurant

Jazz Institute Campus



Performance Hall

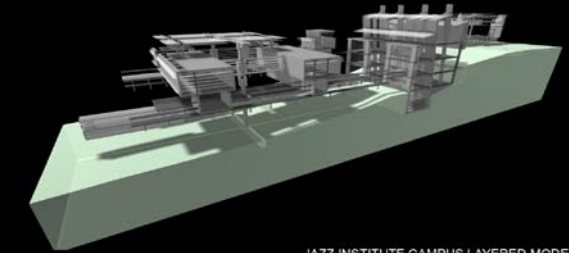
Jazz Concept

Through the diagrammatic analysis of "Lester Leaps In", the program was sited in a manner consistent with musical notation. The layers reflect the rhythmic patterns and fluctuations that occur throughout improvisational Jazz music. The layers created through diagrams positioned on the Fort Adams site create two distinct bars that are connected by a bridge element. The two bars house the campus and museum environments while the bridge connects the music and performance elements.

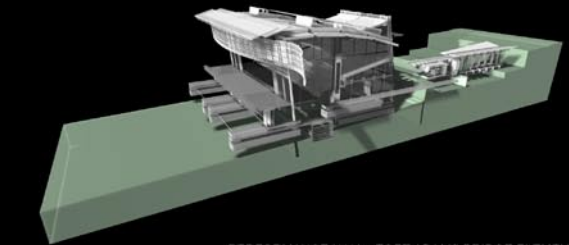
bridge

layer

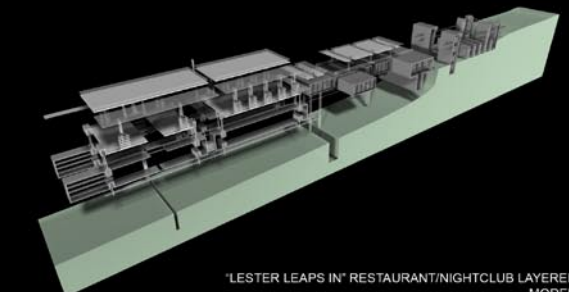
LAYERED SPATIAL DEVELOPMENT UTILIZING FORM-2 TO PRODUCE A SERIES OF RENDERED MODELS



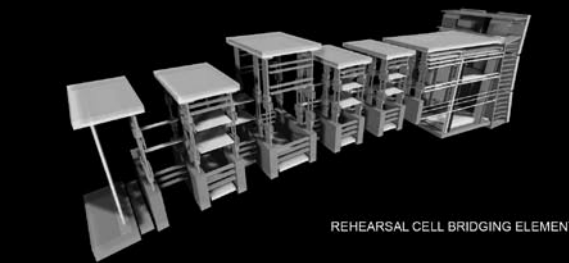
JAZZ INSTITUTE CAMPUS LAYERED MODEL



PERFORMANCE HALL - FORT ADAMS BRIDGE ELEMENT MODEL



"LESTER LEAPS IN" RESTAURANT/NIGHTCLUB LAYERED MODEL



REHEARSAL CELL BRIDGING ELEMENT

model

program



- Institute for Jazz Studies
- Campus
- Administration 1
- Dorms 2
- Lecture Halls 3
- Rehearsal Halls 4
- Rehearsal Cells 5
- Jazz Research Library 6
- Jazz History Archives 7
- Tourist Traps
- Jazz History Museum 8
- Monk's Dream Bookstore 9
- Market/Kiosks 10
- Refreshment Bars 11
- Performance
- Jazz Concert Hall 12
- Lester Leaps In Nightclub 13
- Outdoor Amphitheater 14
- Newport Jazz Festival 15
- Gardens
- Jazz Sound Garden 16
- Instrument Garden 17
- Entry Garden 18
- Water Garden 19
- Plazas
- Playgrounds 20
- Body Exercise 21
- Informal Sports 22
- Transportation
- Parking 23
- Jazz Boat Dock 24
- Bus Stop Stations 25
- Water Taxi Station 26

section

collage

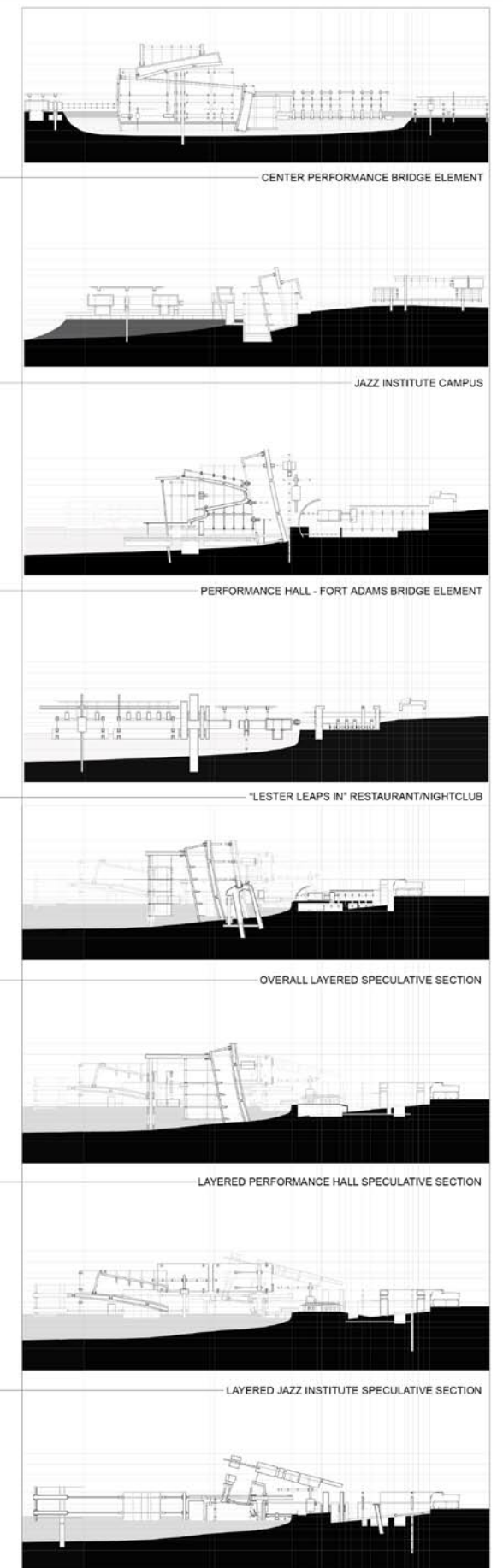
The diagrammatic analysis of "Lester Leaps In" generated a series of collage and tracings consistent with musical notation and structure. The collage sequence below allowed for subsequent investigation of the Fort Adams site.



Further analysis of the collage produced layered line tracings that were reconfigured into speculative sections. The spatial relationships found in the relief studies and layered slice models were developed from this series of section drawings.

section

SECTION H - H





Performance Hall from Deck of Jazz Water Taxi

Performance Hall Concert



Reasons for the nomination:

This student's studio project exemplified the processes and methods of abstraction as generators of form that were required in this studio. This project reflects a fluid transition from early concept to architectural development. The design elements interact with the historic Fort Adams site, which remains independent, but feels as if it is in a call and response dialogue with the new complex.

Because of the intricacy and complexity of the early analytic collages, the student was challenged by the instructor to learn and employ **form•Z** as the primary design and representation tool. Critical to the project was **form•Z**'s ability to synthesize form, allowing for the rapid generation of multiple prototypes, which were evaluated and adapted to improvisational circumstances. **form•Z** facilitated an imaginative expression of form, light, and surface that would not have been readily possible with traditional modeling methods. Through digital modeling, the student was able to constantly change and modify the project without investing heavily into rigid physical models. Rather than working within a confining physical medium, the student worked with flexible media that allowed the design to constantly grow and change over time.

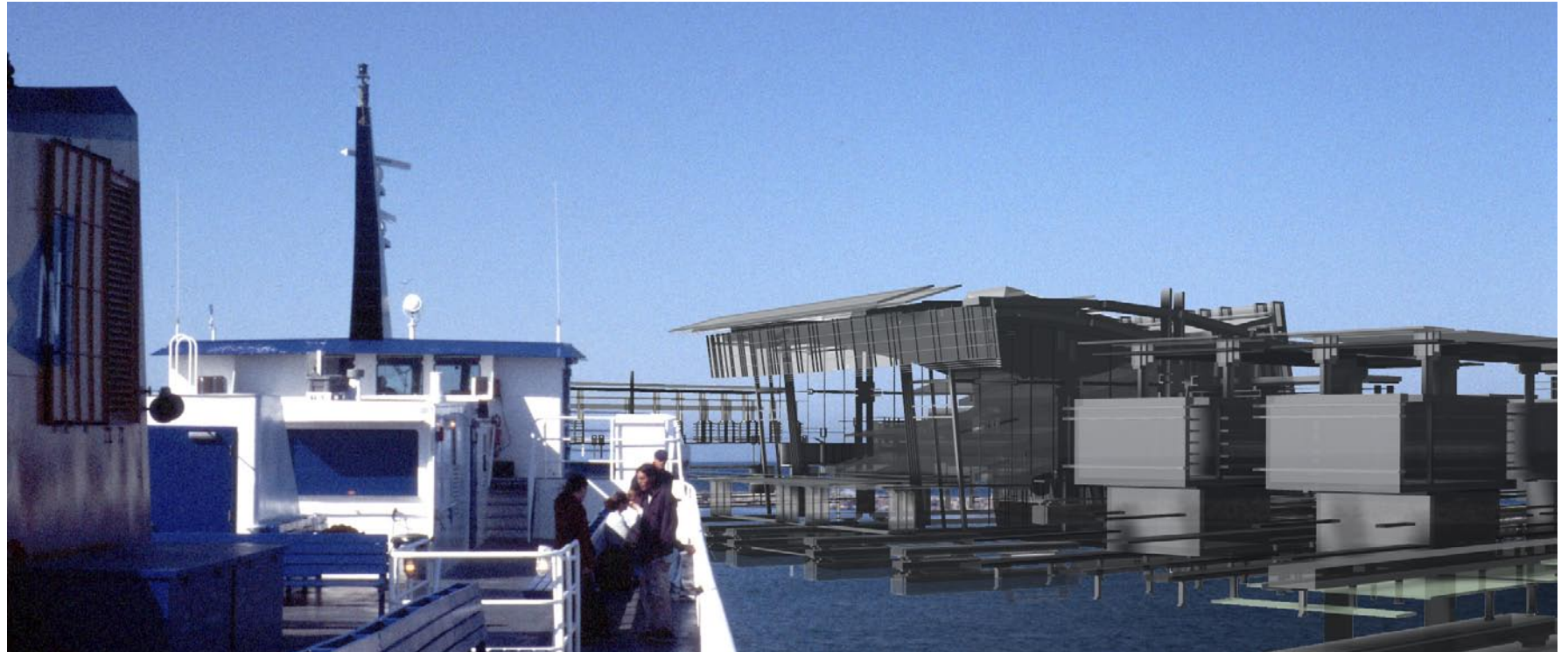
Most students in the studio, including this student, had very little formal instruction in the application, only having about a month's prior experience with it. But unlike others in the studio, who relied on mostly traditional tools, this student brought a specific agenda of curiosity to the application and self-taught himself **form•Z** through the production of a critical project. He expanded his knowledge of **form•Z** as he designed.



Jazz Campus Garden Pier



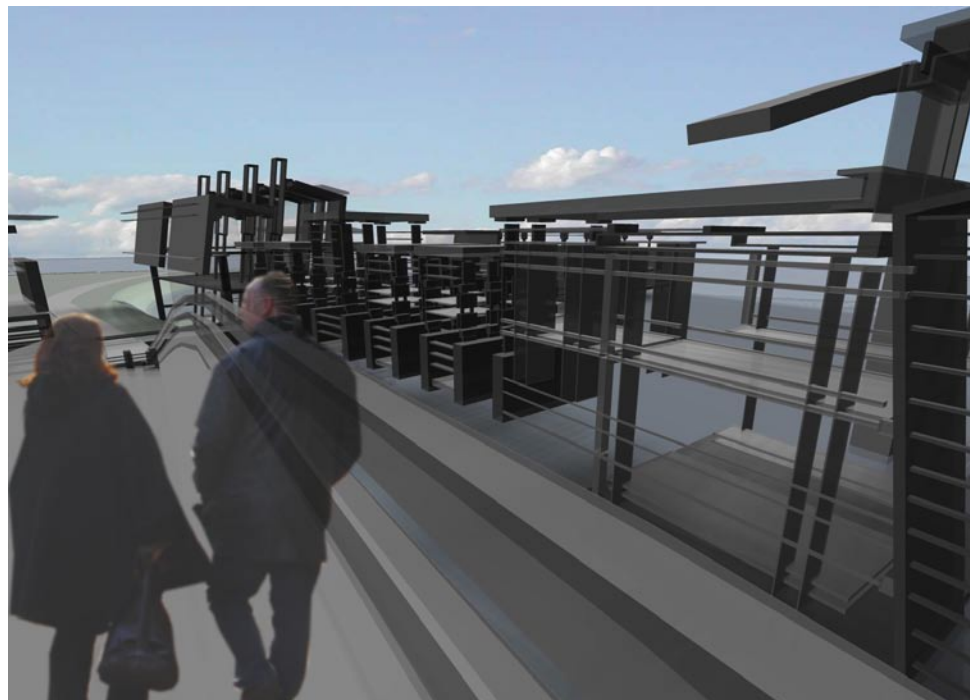
"Lester Leaps In" Restaurant/Nightclub Deck Perspective of Performance Hall



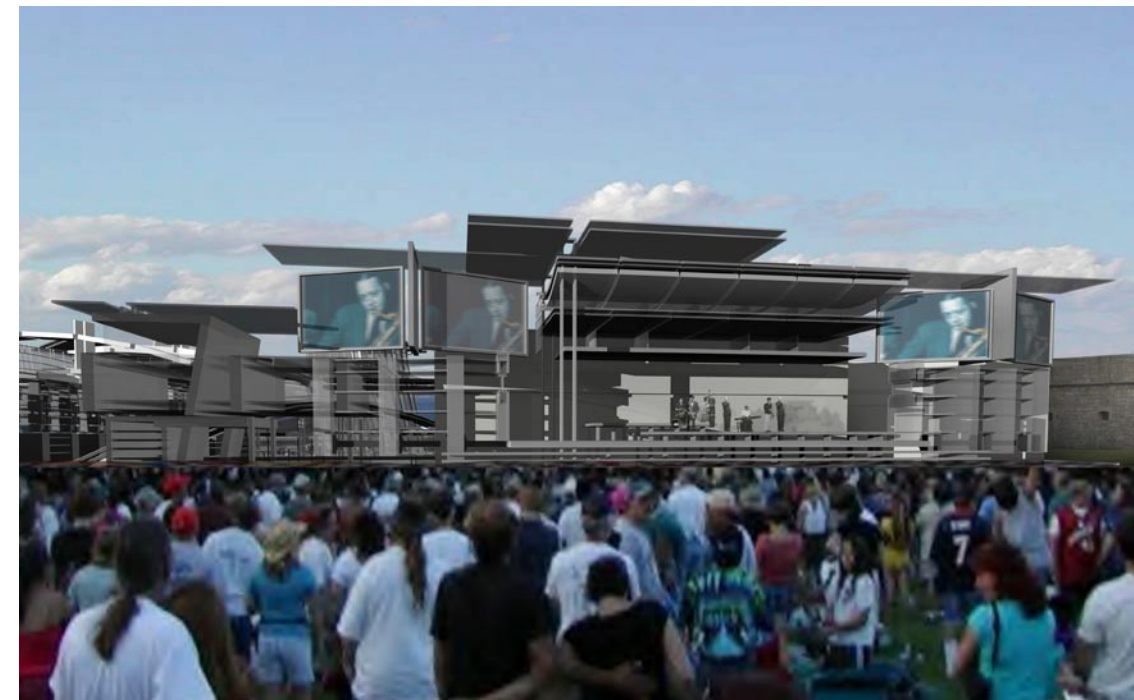
View from Jazz Water Taxi Approaching Performance Hall



View of Jazz Water Taxi Approaching Performance Hall



Bridge Walk Connecting Entry to Jazz Campus and Festival Site



Newport Jazz Festival Performance Stage