



**Honorable
Mention**

Project Title: **Designing a Contemporary Art Museum: From Different Perspectives**
Student Name: **Aditi Amalean**

Level: **Fourth Year**
Course: **Interior Architecture Design Studio III**
Advisor/Instructor: **Tina Sarawgi**
Principal Investigator: **Tina Sarawgi**
Department/School: **Department of Interior Architecture, University of North Carolina at Greensboro, Greensboro, North Carolina**

Summary description of project:

The project involved redesigning the Weatherspoon Art Museum located in the University of North Carolina at Greensboro. The opportunity involved designing a suitable museum environment which will appeal to a wide spectrum of public interests, exploring an appropriate physical definition and public face to an evolving contemporary cultural environment using cutting edge technologies. Investigation on how these technologies change our relationships with museums, art, and one another was to be further examined.

Reasons for the nomination:

The work of this student has been exceptional inspiring other students. In this project she redesigns a contemporary art museum catalyzing it with learning, relaxation and entertainment opportunities around a central atrium space.

The project proposes a Series of gallery spaces, with a range of volumes to accommodate the diversified display requirements of contemporary artwork. Learning environments such as studios, classrooms and media lounges for research and art education are interspersed with the galleries to encourage learning about contemporary art. Social spaces such as a café, are provided to complement the experience, for informal discussion and reflection.

The spaces accommodating these activities derive their volume and orientation from their function infusing the atrium space with dynamism and energy.

The student uses **form•Z** effectively to reveal the volume, materiality and spirit of the place. The final design is a successful interplay of solid and void, light and shade, and motion facilitated through the use of **form•Z**.



Media Lounge

sculpture courtyard

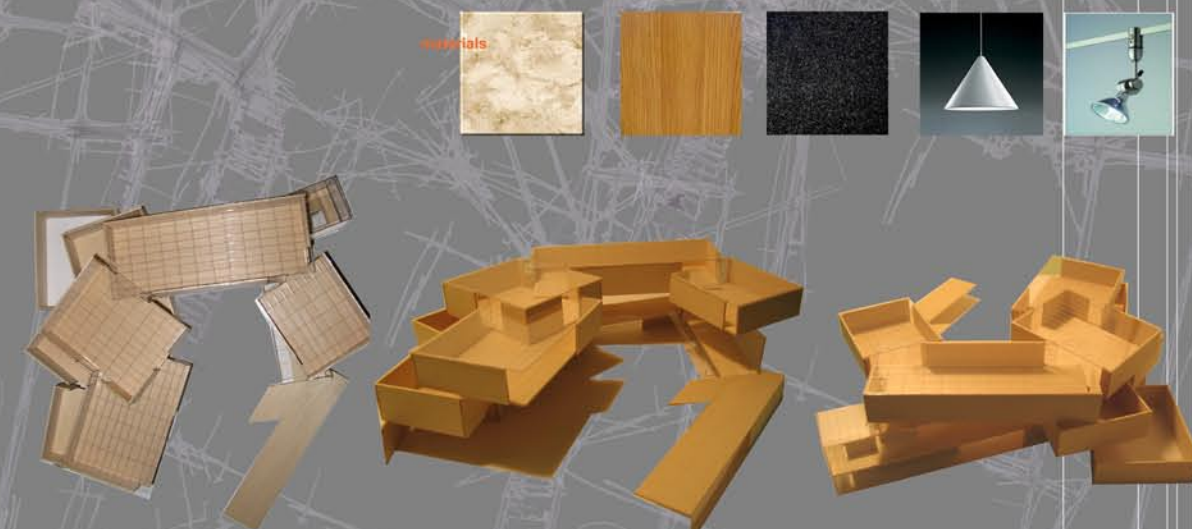
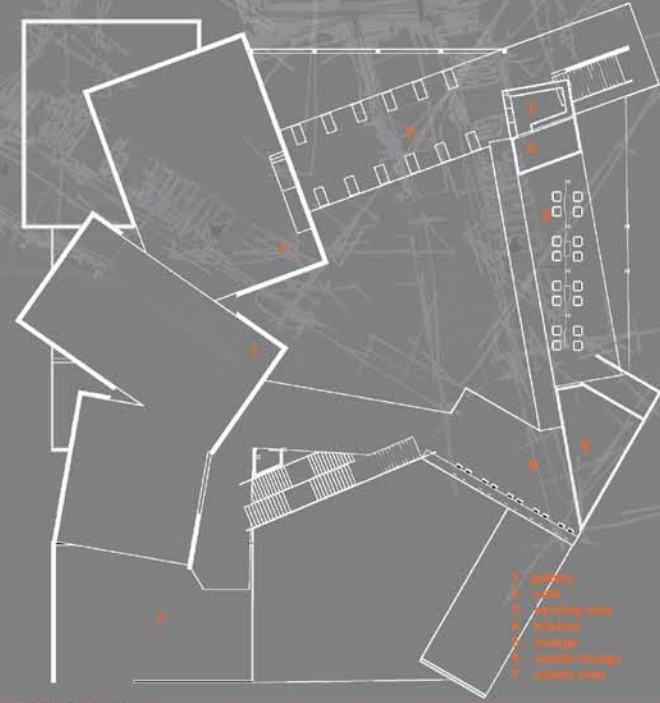
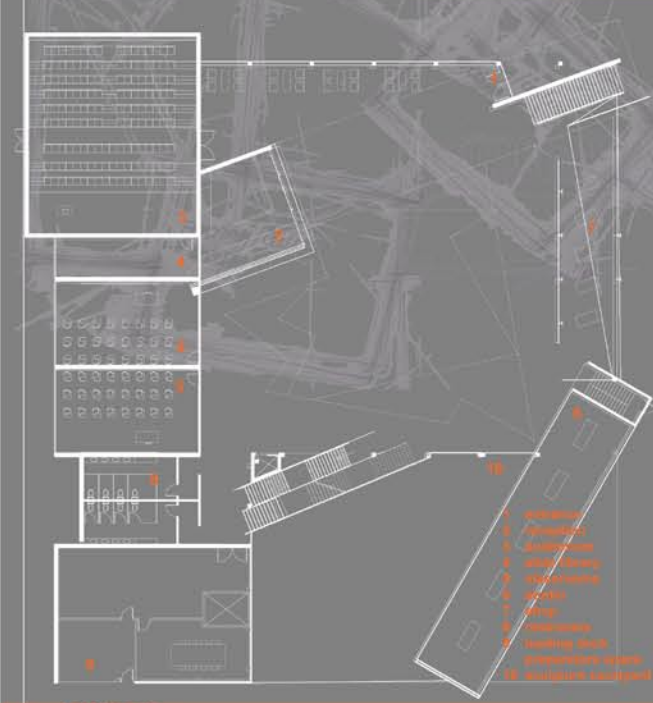
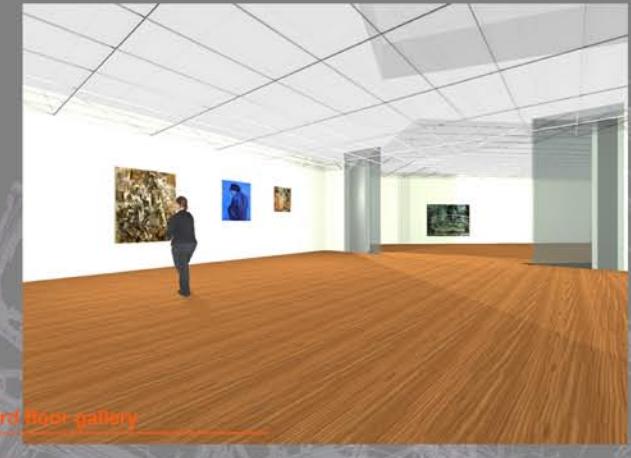
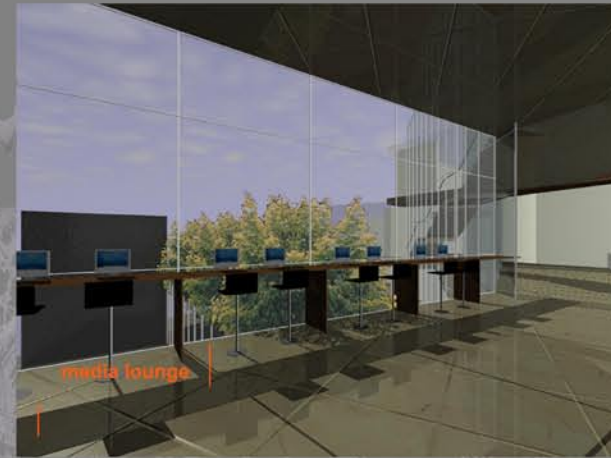
weatherspoon art museum experiencing contemporary art

from different perspectives
and shifted angles

Contemporary art is open to interpretation and reflection. It is provocative, stimulating responses depending on the perspective of the viewer.

The space abstracts the urban environment, by creating a series of forms at shifted angles to encourage movement through, and transition reflects back different points of view, creating a sense of movement.

Reimagining the Weatherspoon Art Museum, situated on the intersection between Lake St. and Spring Garden St. is an opportunity to raise cultural and aesthetic perceptions among its audiences. The space integrates art, design with an education, encouraging interpretation and research both independently and through informal groups.





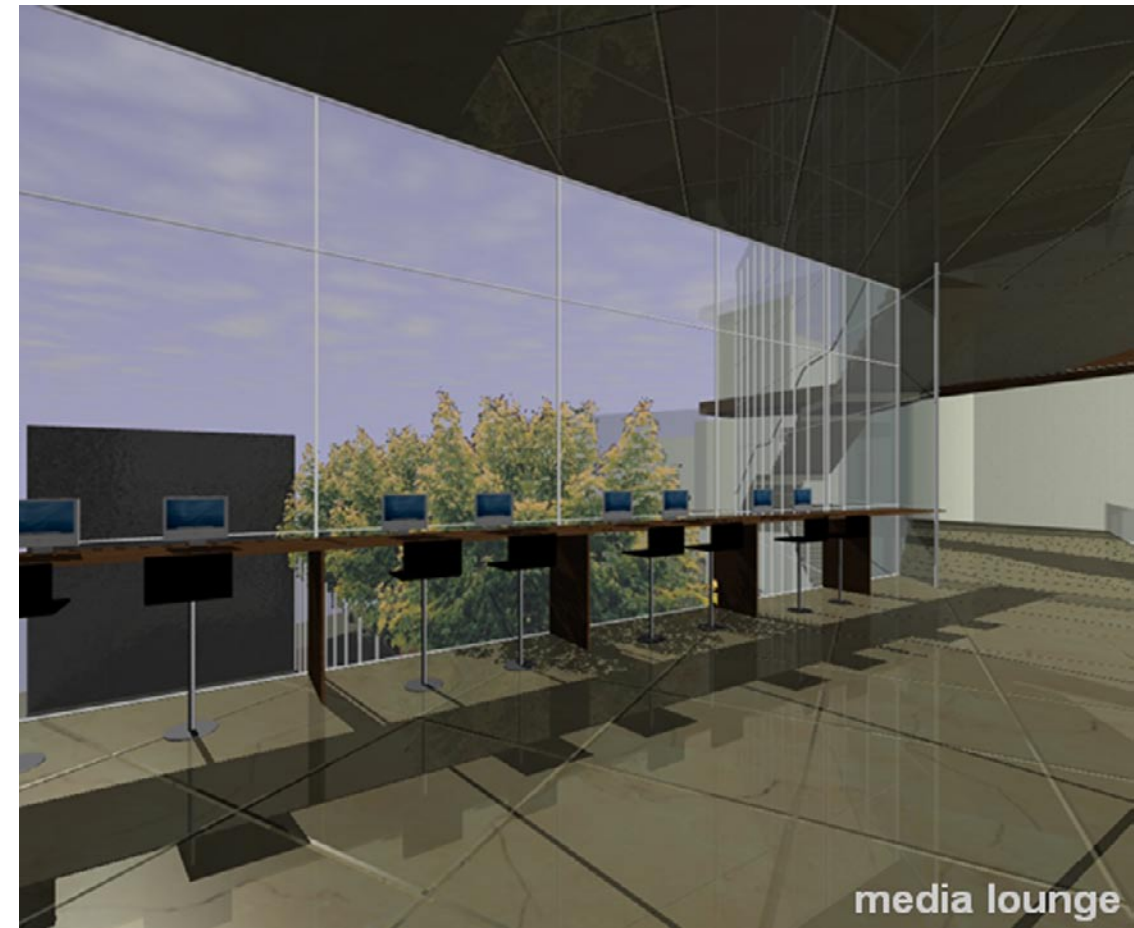
central atrium space - view from first floor

Central Atrium Space



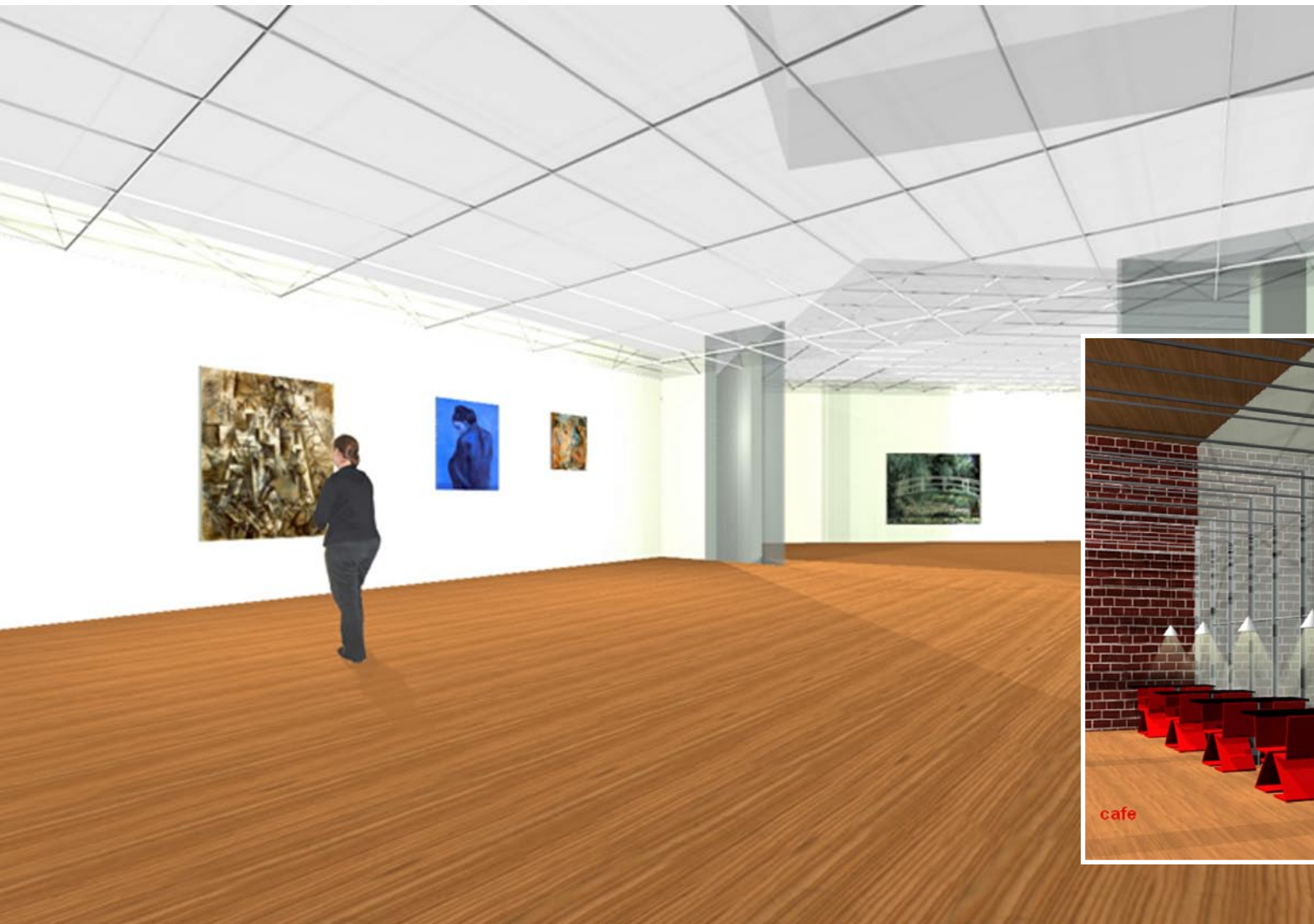
reception area

Reception Area



media lounge

Sculpture Courtyard



Gallery - third floor



cafe

Cafe



cafe