



Project Title: **House in Layers/Gift Shop & Studio Living**  
 Students Name: **Aaron Senne**  
 Level: **3rd Year**  
 Course: **Design Studio**  
 Advisor/Instructor: **M. Saleh Uddin**  
 Principal Investigator: **M. Saleh Uddin**  
 Department / School: **Department of Environmental Design**  
**University of Missouri-Columbia,**  
**Columbia, Missouri**

**Summary description of project:**

Understanding principles of design is a prerequisite for any designer. Study of basic design at beginning studios are formulated to address this significant issue. But often times students are not aware how those abstract two or three-dimensional designs relate to advanced spatial problems. This assignment tries to demonstrate how basic design issues relates to an architectural problem with particular functions.

The first phase dealt more with the aesthetics and integrity of three given form-volumes. Significant importance was given to interrelationship of path system/s, space/s and openings. The goal was to understand the form-volume, without destroying the original volume (real or implied.)

In this phase you will intervene specific functions in to the form to see how they affect each other. A successful intervention will honor the importance of both function and form. There is no such a truth as "Form Follows Function" or "Function Follows Form." They should both affect each other, but not to such an extent where they loose their identity and integrity.

While you introduce (or force) functions to respond (or fit) the form-volume, do not overlook the importance of functional relationship, sound structural system, and openings relating to the functions on either side. You will need to study anthropomorphic proportions to create successful interiors.

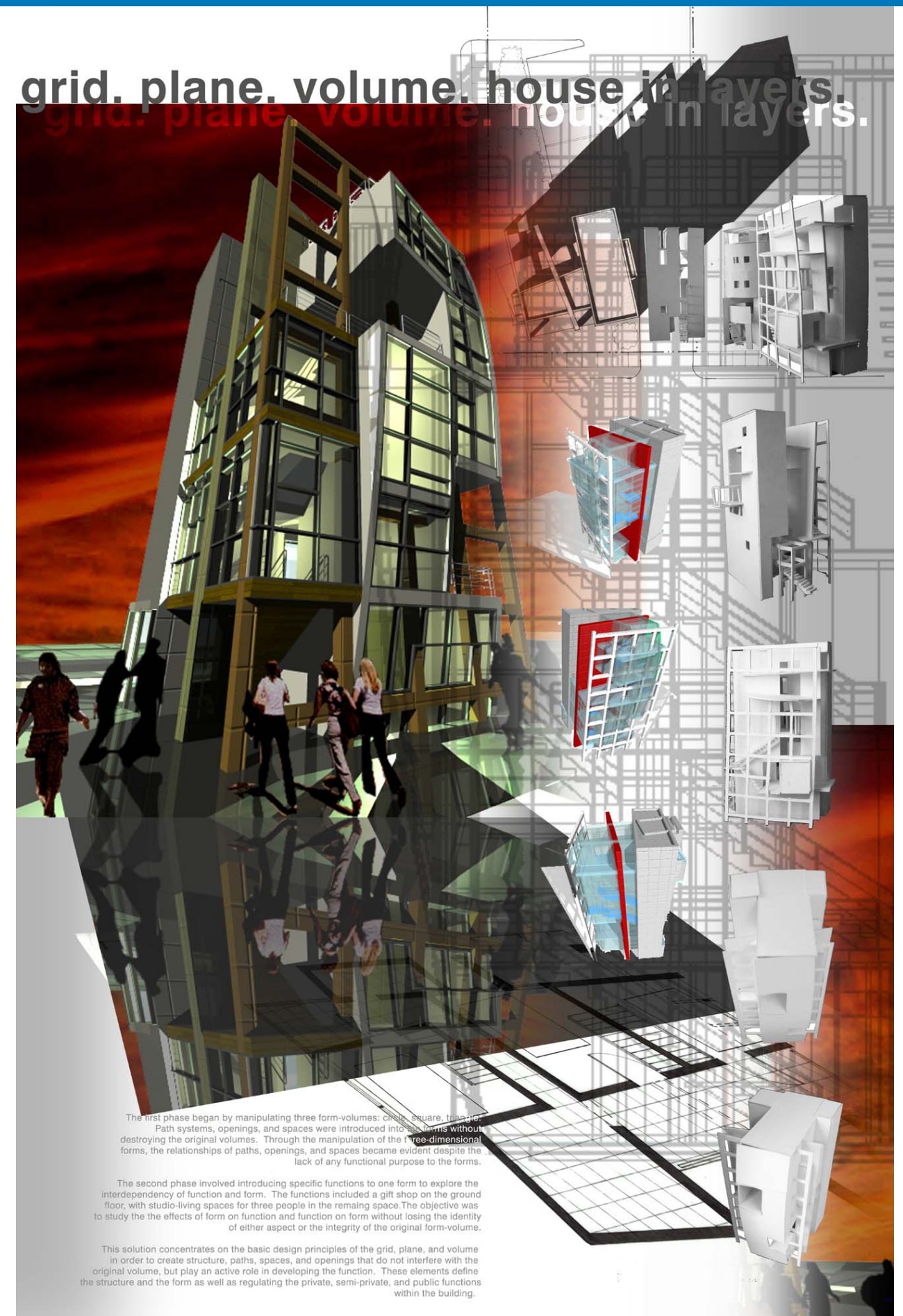
**Reasons for the nomination:**

- Successful intervention of function within the given volume.
- Identify of form, and quality of spatial flow maintained.
- Structural integrity contributes to the formation of spaces.
- Total form-volume transforms effectively from solid to transparent by the use of defined elements such as: mass, plume, and grid.
- Skillful use of 3D computer modeling as well as total representation.

**Jury Comments**

I particularly liked the clear presentation of the various levels of design and morphology. The communication through extensive use of 3D models of the project, made it easy to understand visually.

- *Alain Cohen*

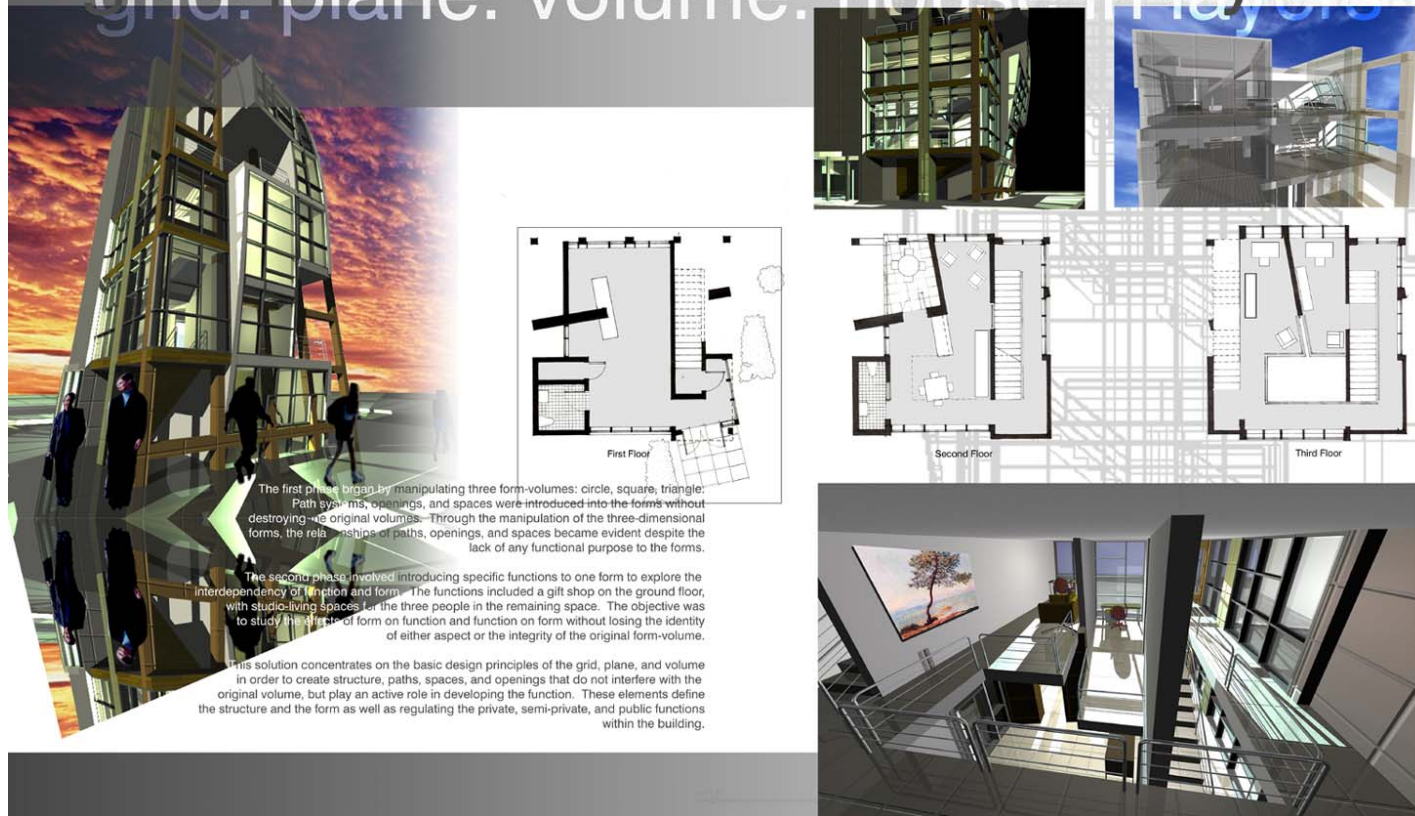


The first phase began by manipulating three form-volumes: circle, square, triangle. Path systems, openings, and spaces were introduced into the forms without destroying the original volumes. Through the manipulation of the three-dimensional forms, the relationships of paths, openings, and spaces became evident despite the lack of any functional purpose to the forms.

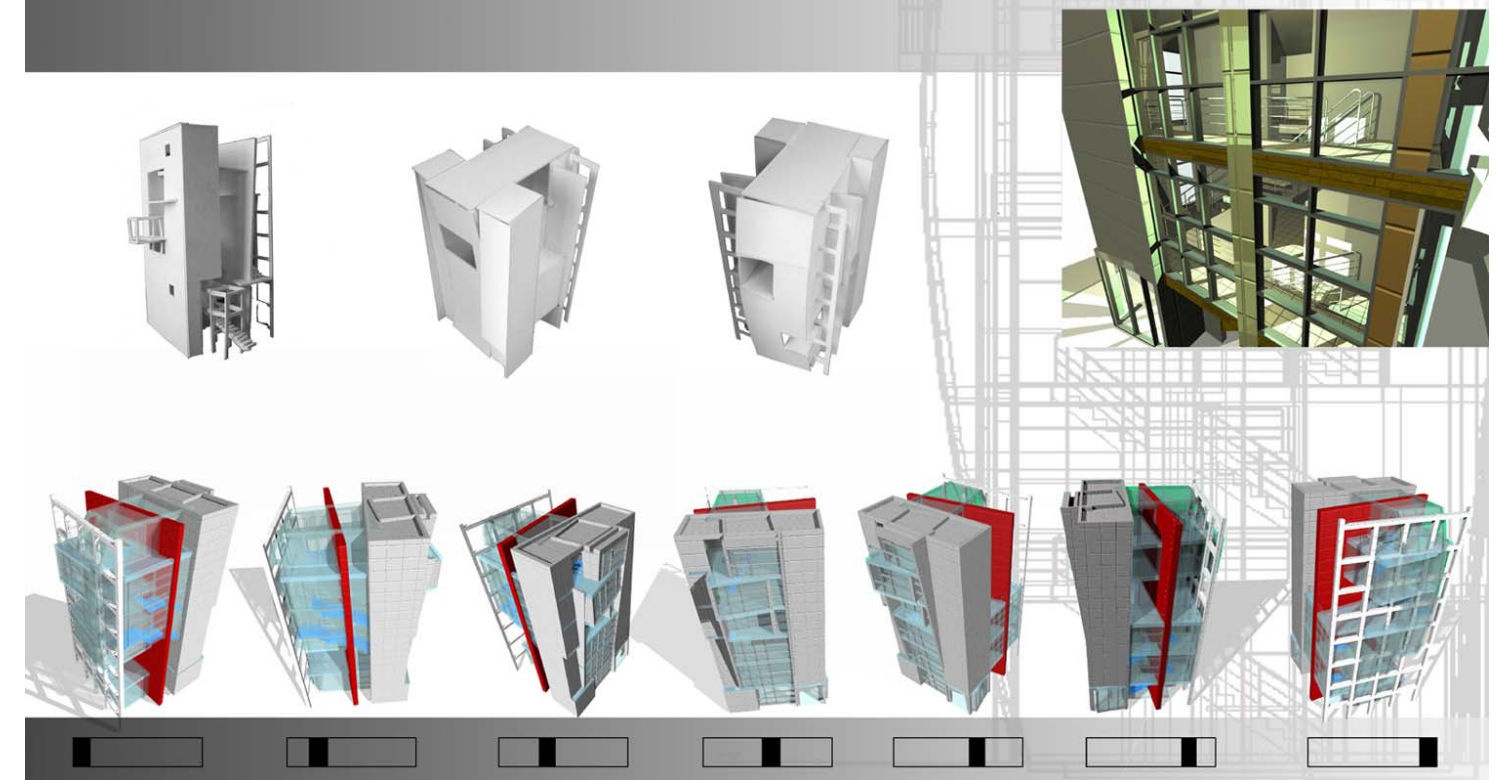
The second phase involved introducing specific functions to one form to explore the interdependency of function and form. The functions included a gift shop on the ground floor, with studio-living spaces for three people in the remaining space. The objective was to study the effects of form on function and function on form without losing the identity of either aspect or the integrity of the original form-volume.

This solution concentrates on the basic design principles of the grid, plane, and volume in order to create structure, paths, spaces, and openings that do not interfere with the original volume, but play an active role in developing the function. These elements define the structure and the form as well as regulating the private, semi-private, and public functions within the building.

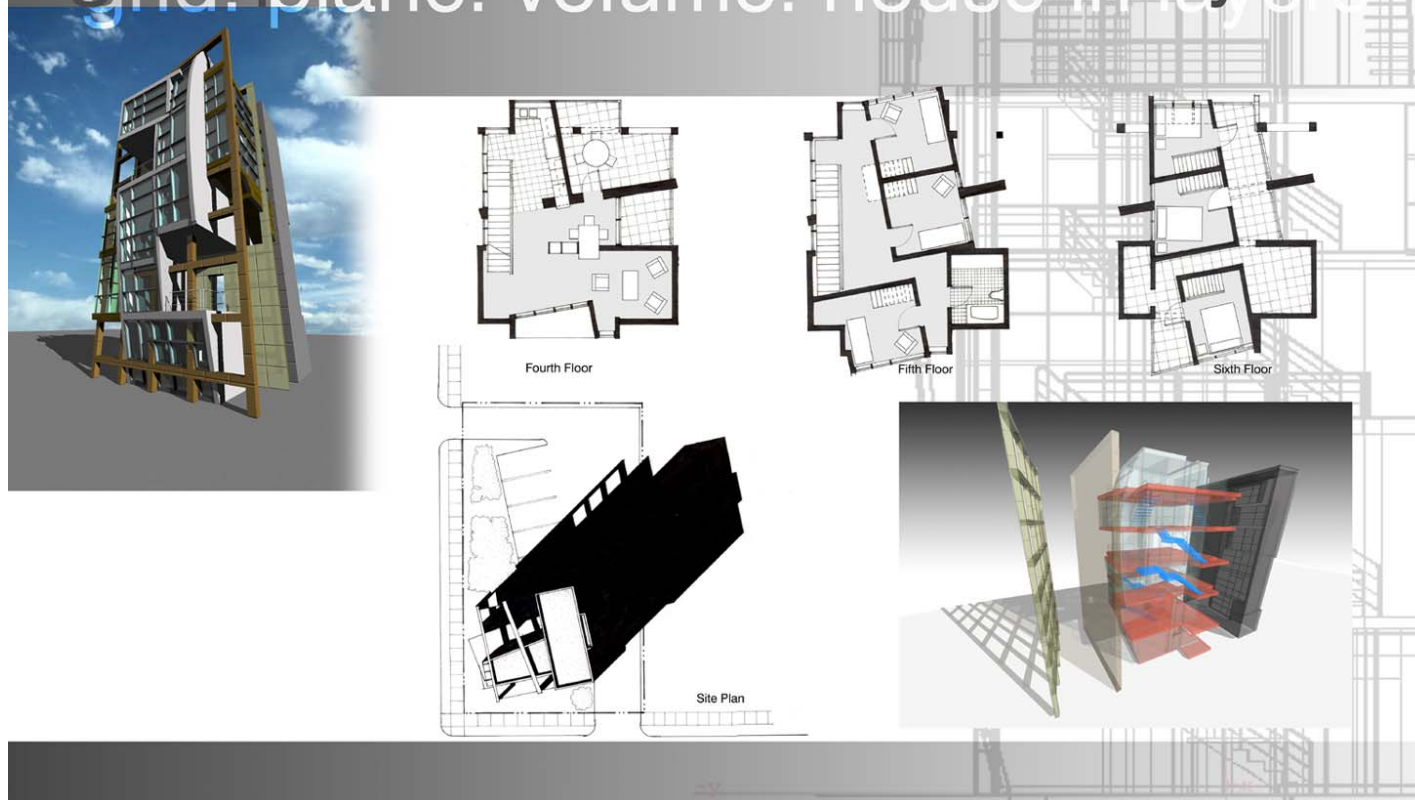
grid. plane. volume. house in layers



grid. plane. volume. house in layers



grid. plane. volume. house in layers



grid. plane. volume. house in layers



